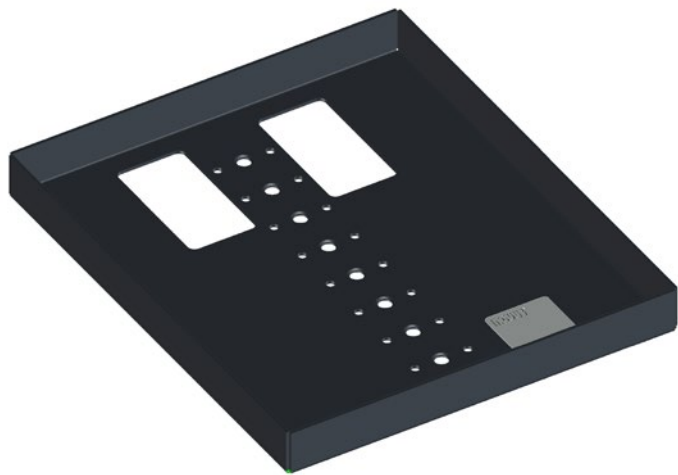



# NOVUS POS connect plate Universal 183x216



The quality statement „German Engineering“ ensures that a product was developed according to German quality standards by our engineering experts. All Novus products carrying the „German Engineering by Novus“ signet are manufactured in our own plants around the world by our own workforce, managed and supervised by our head-quarters in Germany.

- Suitable connect plate as a universal plate
- Handle for easy movement
- dimensions: W 183 mm, H 216 mm, D 21,5 mm
- High-quality metal, powdered in anthracite
- Obligatory supplement is a POS base connect or a POS connect arm

Version	Art.No.	EAN Code
 anthracite	851+0035+013	4009729061251